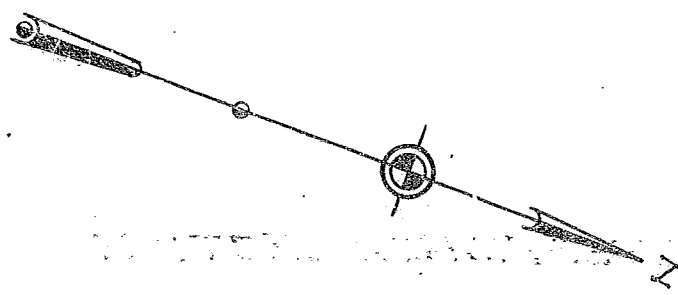
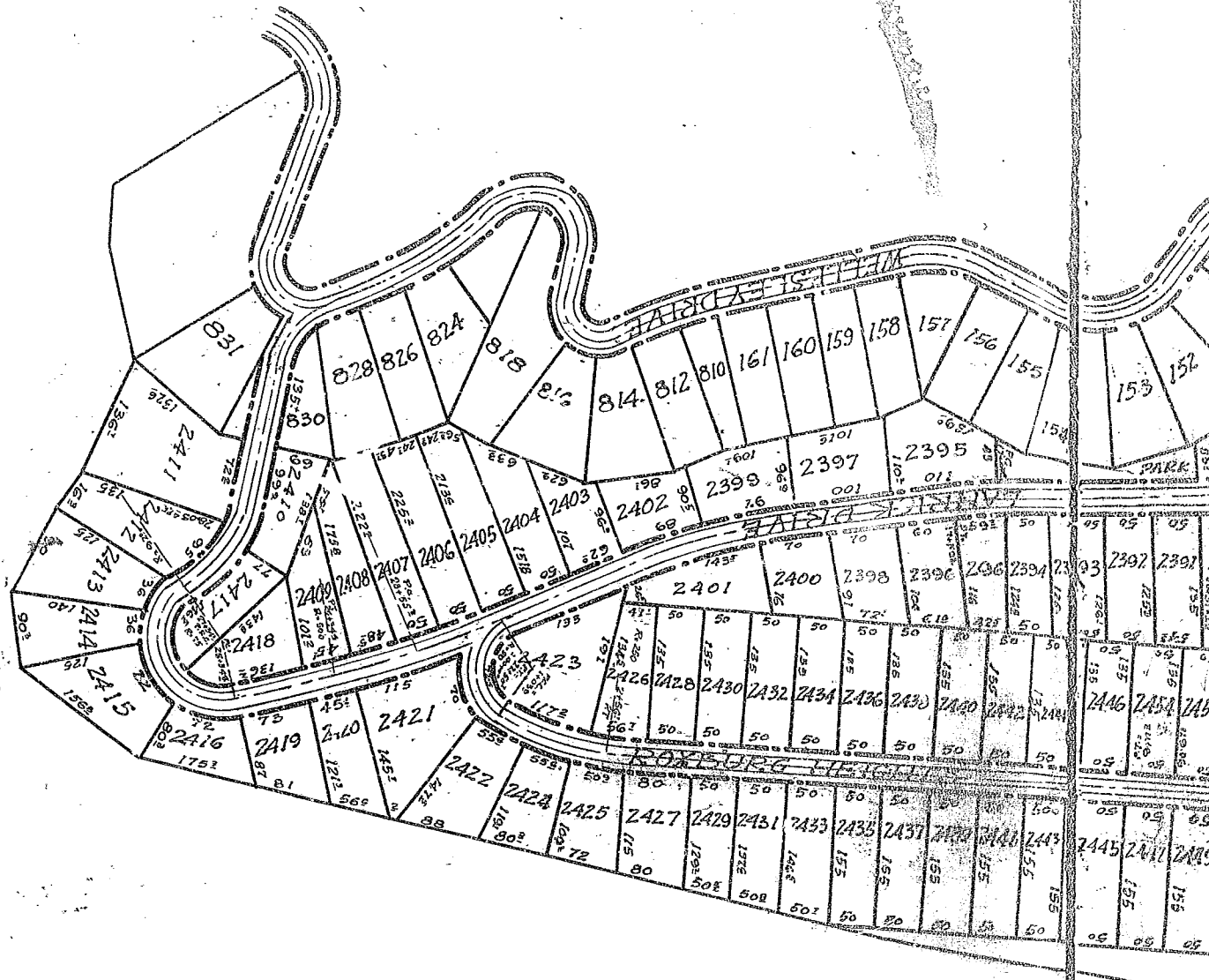
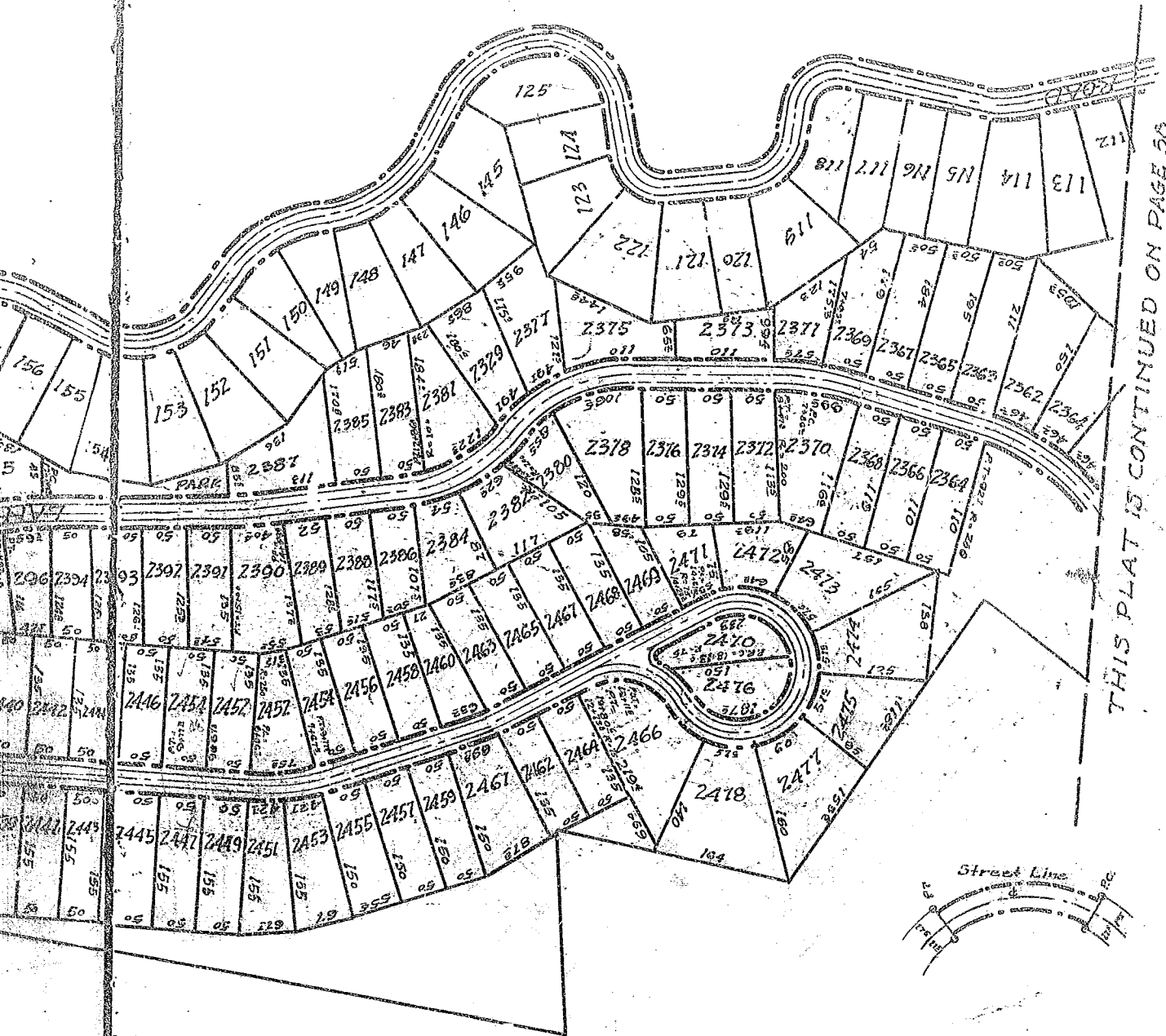


RECORDED FROM RECORD OF 60 FT. IN AND RECORDED Oct 2 1923 by R.A.M.



Note: Concrete Monuments Placed at The Beginning And End of All Curves.



THIS PLAT IS CONTINUED ON PAGE 50

HOLMES-FISHER SECTION  
 OF  
 LAKE LANIER DEVELOPMENT  
 TRYON, N.C.

SCALE 1" = 120'

Office of Geo. Kershaw Hendersonville, N.C.  
 Oct. 5, 1925.